



HkwL[kyu dk [krjk

MkWO xhrk

Igk;d izoDrk

lezkV i`Fohjkt pkSgku fMxzh dkWyst cxxir

1- ifjp;

HkwL[kyu e/; çkar esa fouk'kdkjh çk—frd [krjksa esa ls ,d gSA blesa Åaps] ÅcM+&[kkcM+ vkSj o"kkZou ls <ds igkM+ gSaA o"kkZ vkerkSj ij iwjs çkar esa vf/kd gksrh gS] vf/kdka'k {ks=ksa esa 2]000 feeh@o"kkZ ls vf/kd o"kkZ ik;h tkrh gSA Hkw dai ¼Hkw dai;rk½ ds vykok o"kkZ lcls vke HkwL[kyu fV^axj ra= gSA e/; çkar esa vf/kdka'k HkwL[kyu de vkcknh okys {ks=ksa esa gksrs gSa] muds O;kid forj.k vkSj muds vkdkj ds ifj.kkeLo:i thou dh gkfu gksrh gS vkSj ifjogu cqfu;knh <kaps dks uqdlku gksrk gSA ¼lzksr ^jSfiM esFkM~l v,Q ySaMlykbM gStMZ eSfiax** ikiqvK U;w fxuh dsl LVMh] fczfV'k ft;ksy,ftdy losZ ,aM ft;ksy,ftdy losZ v,Q ikiqvK U;w fxuh] 1995½A

2- MsVk lzksr ,oa lhek,a

v/;;u {ks= esa HkwL[kyu ds fy, mÜkjnk;h dkjd vkSj muds lzksr uhps of.kZr gSa%

rkfydk% HkwL[kyu fo'ys"K.k ds fy, ç;qä MsVklSV dk lkjka'k

Sl. No.	Key Attributes	Data Types	Identified Data Gaps	Vintage	Data Sources
1	Slope Degree	Slope Angle	No gap	2007	PNGRIS
2	Aspect Direction Aspect Degree	Slope Aspect	No gap	2007	PNGRIS
3	Elevation	Elevation	No gap	2007	PNGRIS
4	Lithological Description	Geology	No gap	2007	PNGRIS
5	Landforms Description	Landforms	No gap	2007	PNGRIS

6	Soil Group	Soil	Soil depth and texture details absent	2007	PNGRIS
7	Peak Ground Acceleration	Seismicity	No gap	2013	PCRAFI
8	Seasonal Rainfall Distribution	Rainfall	No gap	2007	PNGRIS

rkfydk ekStwnk MsVk esa ekStwn MsVk varjky vkSj oSdfYid MsVk lzksr dk lkjka'k fn[kkrh gS ftdk mi;ksx Vhe us mu varjkyksa dks ikVus vkSj dk;Z dks iwjk djus ds fy, fd;k gSA

rkfydk% MsVk varjky vkSj oSdfYid MsVk lzksrksa dk lkjka'k

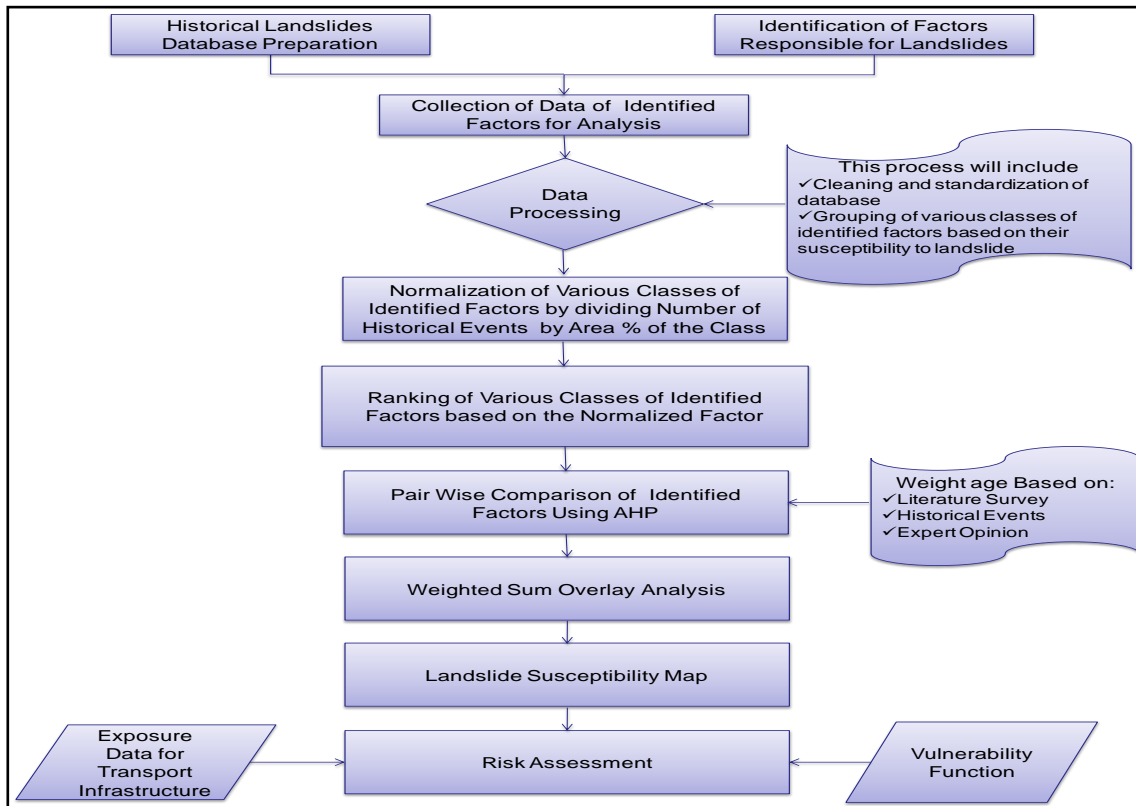
Sl. No.	Data Types	Data Gaps	Concerned Authority/ Department	Work Around
1	Soil	Description of soil texture and depth information missing	PNGRIS	Soil data from the Food Agriculture Organization's (FAO) Harmonized World Soil Database has been used

mijksä rkfydk ds lanHkZ esa] ifj;kstuk Vhe us ih,uthvkjvkbZ, l Is ,d= fd, x, feêh ds vkadM+ksa dh leh{kk dh gSA bl MsVk esa vad eku ds :i esa cukoV vkSj xgjkBZ dh tkudkjh tSlh vko';d fo'ks"krk, j gksrh gSaA bu ewY;ksa dk fooj.k miyC/k ugha gS blfy, Vhe us ,Q,vks ds gkeksZukbTM oyZ~M l,;y MsVkcsI ls e`nk MsVk dk mi;ksx fd;k gSA bl e`nk MsVkcsI esa cukoV vkSj xgjkBZ dh tkudkjh ds lkFk feêh dh tkudkjh gksrh gS] tks <yku fLFkjr fo'ys"k.k ds fy, vko';d çeq[k fo'ks"krk gSA

blds vykok] PNGRIS ls çklr IHkh MsVk vkdkj Qkby Lo:i ¼- ,l,pih½ esa gS vkSj fdlh Hkh MsVk ds fy, fjt,Y;w'ku fooj.k ekStwn ugha gSA

3- çfØ;k

v;;u {ks= ds fy, HkwL[kyu laosnu'khy {ks= ekufp= fodflr djus ds fy, lexz –f"Vdks.k fp= esa fn[kk;k x;k gS&

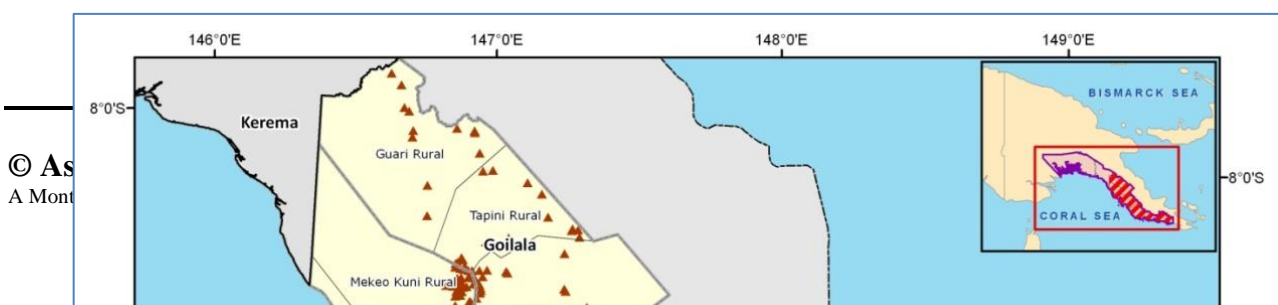


3-1 ,sfrgkfld HkwL[kyu dh ?kVukvksa dk laxzg

HkwL[kyu [krjs ds vkdyu esa] HkwL[kyu dh ?kVukvksa ij ,sfrgkfld tkudkjH lcls egRoiw.kZ fopkjksa esa ls ,d gSA bls fuEufyf[kr ds fy, var-Zf"V feyrh gS&

- ?kVuk dh vko`f`Uk
- 'kkfey HkwL[kyu ds çdkj
- ek=k] LFkkfud forj.k] vkSj bls gksus okyh {kfr
- fofHkUu dkjdxsa ds chp laca/k

RMSI Vhe us jk"V^ah; vkink dsaæ] DMPGM, PNGRIS iksVZ eksjsLch HkwHkkSfrdh; os/k'kkyk] ikiqvU;w fxuh fo'ofokj; vkSj dk;Z foHkkx vkSj vU; varjZ"V^ah; lzksrksa tSlS USGS] MsfluosaV]] fjiyhQ osc] vkfn ls vko';d MsVk çklr djus dk ç;kl fd;k gS] ysfdu dksbZ MsVk ugha e/; çkar ds fy, muds ikl ,sfrgkfld HkwL[kyu dh ?kVuk,a miyC/k gSaA çkstsDV Vhe us Google /kjrH ds 3D -'; dh lgk;rk ls HkwL[kyu ds fy, yxHkx 604 LFkkuksa ij dCtk dj fy;k] ftls fp= esa n'kkZ;k x;k gS&



**fp=% v/;u {ks= esa HkwL[kyu dh ?kVukvksa dk LFkku Google
/kjrhd dk mi;ksx djds dSlpj fd;k x;k**

3-2 HkwL[kyu ds fy, ftEesnkj dkjdxsa dh igpku

bl dne esa HkkSfrd dkjdxsa dh igpku 'kkfey gS] tks çR;{k ;k vçR;{k :i ls ih,uth esa <yku vLFkjrkl ls lacaf/kr gSaA HkwL[kyu fo'ys"k.k ds fy, vko';d MsVk <yku dks.k] <yku igyw] ÅapkbZ] Hkwfe :i] feêh] HkwfoKku/fyFkksy,th] Hkw daih;rk vkSj o"kkZ gSaA

3-3 fo'ys"k.k ds fy, igpkus x, dkjdxsa ds MsVk dk laxzg

Vhe us jk"V^{ah}; vkink dsæ] Mh,eihth,e] ih,uthvkjvkbZ,l] iksVZ eksjsLch HkwHkkSfrdh; os/k'kkyk] ikiqvk U;w fxuh fo'ofok; vkSj dk;Z foHkkx vkfn tSlS miyC/k gj laHko lzksr ls vko';d MsVk laxzg ij dke fd;k gSA

3-4 MkVk çkslsflax

fofHkUu lzksrksa ls çklr vkadM+s fofHkUu Lo:iksa vkSj fofHkUu çLrkoksas esa miyC/k FksA çkjafHkd fo'ys"k.k ds ckn] bls dPps MsVk dks ç;ksx djus ;ksX; Lo:iksa esa cnyus ds fy, lalkf/kr fd;k x;k Fkka HkwL[kyu ds çfr laosnu'khyrk ds vk/kkj ij çR;sd dkjd ds fofHkUu oxksaZ dks lewgh—r fd;k x;k Fkka HkwL[kyu ds çfr leku çfrfØ;k okys oxksaZ dks ,d oxZ ds varxZr oxhZ—r fd;k x;k Fkka

3-5 ,sfrgkfld ?kVukvksa dh la[;k dks oxZ ds {ks=% ls foHkkftr djds igpkus x, dkjdxsa ds fofHkUu oxksaZ dk lkekU;hdj.k

HkwL[kyu ds lkFk muds laca/k dks le>us ds fy, çR;sd igpkus x, dkjdksa ds fofHkUu oxksaZ ds laca/k esa ,sfrgkfld HkwL[kyu MsVk dk fo'ys"k.k fd;k x;k Fkka ml oxZ ds dqy {ks=Qy dks foHkkftr djds çR;sd oxZ esa ,sfrgkfld ?kVukvksa dh la;k dks foHkkftr djds çR;sd oxZ ds fy, ,d lkekU;hdj.k dkjd çklr fd;k x;k Fkka

3-6 igpkus x, dkjdksa ds çR;sd oxZ dks laosnu'khyrk lkSaiuk

çR;sd dkjd ds çR;sd oxZ ds fy, O;qRiUu lkekU;hdj.k dkjdksa dks vkxs 1 ls 5 ds iSekus ij jSad fd;k x;k Fkka bu jSafdax dk mi;ksx djds] çR;sd dkjd ds fy, fo"k;xr ekufp= rS;kj fd, x, gSaA

3-7 fo'ys"k.kkRed inkuqØe çfØ;k ¼,,pih½ dk mi;ksx djds igpkus x, dkjdksa dh tksM+hokj rqyuk

var esa] çR;sd dkjd dh rqyuk AHP i)fr dk mi;ksx djds lsV ds vU; dkjdksa ls dh xbZ vkSj çR;sd dkjd ds fy, otu fudkyk x;kA rqyuk fujis{k fu.kZ;ksa ds iSekus dk mi;ksx djds dh xbZ Fkh tks n'kkZrh gS fd ,d dkjd nwljs ij fdruk gkoh gSA mnkgj.k ds fy,] <yku vU; IHkh igpkus x, dkjdksa tSlS feêh] HkwfoKku] vkfn esa lcls egRoiw.kZ dkjd gSA blfy,] <yku dks vU; dkjdksa dh rqyuk esa mPp Hkkj fn;k tkrk gSA

3-8 Hkkfjr ;ksx vksojys fo'ys"k.k

,,pih ls çklr Hkkjksa dk mi;ksx lez çHkko dks fu/kkZfjr djus ds fy, çR;sd dkjd ds fofHkUu laosnu'khyrk ekufp=ksa ds Hkkfjr ;ksx vksojys fo'ys"k.k ds fy, fd;k x;k Fkka ,dy HkwL[kyu laosnu'khyrk lwpdkad ¼LSI½ esa fofHkUu dkjdksa dk ,dhdj.k Hkkfjr jSf[kd ;ksx ¼Voogd] 1983½ ij vk/kkfjr ,d çfØ;k }kjk iwjk fd;k x;k gS%

$$LSI = \sum_{j=1}^n W_j w_{ij}$$

Where:

LSI : Landslide susceptibility index

Wj : Weight value of parameter j

wij : Rating value or weight value of class i in parameter j

n : Number of parameters

4 gStMZ eSfiax

tSlk fd mijksä i)fr esa mYys[k fd;k x;k gS] ;g [kaM ,sfrgkfld ?kVukvksa ds laca/k esa HkwL[kyu ds çR;sd dkjd dk fo'ys"k.k çLrqr djrk gS vkSj fQj IHkh dkjdksa ds la;qä çHkko dh x.kuk e/; çkar dh

HkwL[kyu laosnu'khyrk dks fu/kkZfjr djus ds fy, dh xbZ gSA HkwL[kyu ekufp=.k ds fy, ,sfrgkfld ?kVukvksa ds lkFk dkjd vkSj muds laca/k uhps fn, x, gSaA

4-1 <ky dks.k

<yku dks.k HkwL[kyu ds fy, ftEesnkj çeq[k dkjd gSA PNGRIS ls çklr <yku MsVk dks igys 8 oxksaZ esa foHkkftr fd;k x;k gS vkSj fQj ,sfrgkfld HkwL[kyu ?kVuk ds lkFk fo'ys"k.k fd;k x;k gSA ;g ns[kk x;k gS fd vf/kdka'k HkwL[kyu dh ?kVuk,a ¼92%½ 35 fMxzh <yku dks.k rd gqbZ gSaA çR;sd <yku oxZ dh jSafdax lkekU;hdj.k ewY; ds vk/kkj ij dh xbZ gS ftls fo'ks"k oxZ ds {ks= çfr'kr ls ,sfrgkfld ?kVukvksa dh la;k dks foHkkftr djds çklr fd;k x;k gSA ;gka jSad vkB vf/kdre laosnu'khyrk dks bafxr djrk gS tcfd jSad ,d U;wure laosnu'khyrk dks bafxr djrk gSA bl jSafdax dk mi;ksx djrs gq, <yku ds fy, fo'k;xr ekufp= rS;kj fd;k x;k gSA

rkydk% vkB <yku oxksaZ esa ,sfrgkfld ?kVukvksa dk forj.k vkSj mudh jSafdax

Slope Angle	Count of Historical Events	Area %	Normalization (B/C)	
(A)	(B)	(C)	(D)	Rank
Up to 5	16	0.33	48.00	1
5-10	41	0.13	325.27	2
10-15	92	0.14	675.51	3
15-20	121	0.14	865.32	5
20-25	94	0.12	769.24	4
25-30	108	0.08	1322.91	6
30-35	85	0.04	2151.14	7
>35	47	0.02	2211.71	8
Total	604	1		

4-2 <yku igyw

<yku dk igyw HkwL[kyu dh 'kq#vkr dks çHkkfor dj ldrk gSA ueh çfr/kkj.k vkSj ouLifr <yku igyw ls ifjyf{kr gksrh gS] tks feêh dh rkdr vkSj HkwL[kyu dh laosnu'khyrk dks çHkkfor dj ldrh gSA ,sfrgkfld HkwL[kyu ?kVuk ds lkFk ih,uthvkjvkbZ,l ds <yku igyw MsVk dk fo'ys"k.k fd;k x;k gS vkSj ;g ns[kk x;k gS fd iwoZ]

nf{k.kiwoZ vkSj nf{k.k fn'kk dh vksj <yku ij vf/kd HkwL[kyu gqv k gSA çR;sd oxZ dh jSafdax lkekU;hdj.k ewY; ds vk/kkj ij dh xbZ gS tks ,sfrgkfld ?kVukvksa dh la;k dks fo'ks" k oxZ ds {ks= çfr'kr ls foHkkftr djds çklr fd;k x;k gSA ;gka jSad ukS vf/kdre laosnu'khyrk dks bafxr djrk gS tcf d jSad ,d U;wure laosnu'khyrk dks bafxr djrk gSA bl jSafdax dk mi;ksx djrs gq,] <yku igyw ds fy, fo" k;xr ekufp= rS;kj fd;k x;k gSA

rkfydk% ukS <yku igyw oxksaZ vkSj mudh jSafdax esa ,sfrgkfld ?kVukvksa dk forj.k

Aspect Direction	Count of Historical Events	Area %	Normalization (B/C)	Rank
(A)	(B)	(c)	(D)	(E)
East	105	0.11	943.24	9
Flat slope	0	0.02	0.00	1
North	53	0.11	500.29	3
North East	61	0.12	525.32	6
North West	55	0.11	503.50	4
South	94	0.14	676.15	7
South East	103	0.12	841.74	8
South West	79	0.15	519.56	5
West	55	0.13	437.84	2
	604	1		

4-3 ÅapkbZ

HkwL[kyu dk fo'ys" k.k djrs le; ÅapkbZ MsVk Hkh cgqr egRoiw.kZ fo'ks"krk,a gSa D;ksafd vvx&vyx ÅapkbZ ds fy, feêh] ouLifr vkSj o"kkZ forj.k dh fofHkUu fofu/krk,a gksrh gSaA v/;;u {ks= dh ÅapkbZ ds vk;dM+ksa dks 8 oxksaZ esa foHkkftr fd;k x;k gSA bu oxksaZ dh rgyuk ,sfrgkfld HkwL[kyu dh ?kVukvksa ls dh xbZ gS vkSj ;g ns[kk x;k gS fd HkwL[kyu dh ?kVukvksa dh vf/kdre la;k ¼87%½ 2000 ehVj dh ÅapkbZ rd gqbZ gSA çR;sd mUu;u oxZ dh jSafdax lkekU;hdj.k ewY; ds vk/kkj ij dh xbZ gS tks fd fo'ks" k oxZ ds {ks= çfr'kr }kjk ,sfrgkfld ?kVukvksa dh la;k dks foHkkftr djds çklr fd;k x;k gSA ;gka jSad vkB vf/kdre laosnu'khyrk dks bafxr djrk gS tcf d jSad ,d U;wure laosnu'khyrk dks bafxr djrk gSA bl jSafdax dk mi;ksx djrs gq,] mUu;u ds fy, fo" k;xr ekufp= rS;kj fd;k x;k gSA

rkfydk% vkB mUu;u oxksaZ esa ,sfrgkfld ?kVukvksa dk forj.k vkSj mudh jSafdax

Elevation Class	Elevation Description (m)	Count of Historical Events	Area %	Normalization (C/D)	Rank
(A)	(B)	(C)	(D)	(E)	(F)
Class1	0-500	116	0.55	211.65	2
Class2	500-1000	185	0.17	1084.67	6
Class3	1000-1500	126	0.10	1264.91	7
Class4	1500-2000	101	0.07	1359.75	8
Class5	2000-2500	40	0.05	756.65	5
Class6	2500-3000	26	0.04	732.37	4
Class7	3000-3500	10	0.02	612.37	3
Class8	3500-4000	0	0.00	0.00	1
	Total	604	1.00		

4-4 HkwfoKku

iwjs v/;u {ks= dks HkwL[kyu dh laosnu'khyrk ds vk/kkj ij 8 HkwoSKkfud lewgksa esa foHkkftr fd;k x;k gSA ,sfrgkfld ?kVukvksa ds vk/kkj ij ;g ns[kk x;k gS fd feêh] dksyqfo;e] 'ksy] QkbykbV] f'kLV] cslkYV vkSj ekbuj ,afMflfVd ,XyksejsV esa vYV^akeSfQd j,d VqdM+ksa okys lewg HkwL[kyu ds fy, vfrlaosnu'khy gksrs gSaA çR;sd HkwoSKkfud lewg dh jSafdax lkekU;hdj.k ewY; ds vk/kkj ij dh xbZ gS tks fd fo'ks"k lewg ds {ks= çfr'kr ls ,sfrgkfld ?kVukvksa dh la;k dks foHkkftr djds çklr fd;k x;k gSA ;gka jSad vkB vf/kdre laosnu'khyrk dks bafxr djrk gS tcfj jSad ,d U;wure laosnu'khyrk dks bafxr djrk gSA bl jSafdax dk mi;ksx djrs gq, HkwfoKku ds fy, fo"kr ekufp= rS;kj fd;k x;k gSA

rkfydk% vkB HkwoSKkfud lewgksa esa ,sfrgkfld ?kVukvksa dk forj.k vkSj mudh jSafdax

Geology group	Rock Description	Count of Historical Events	Area %	Normalization (C/D)	Rank
(A)	(B)	(C)	(D)	(E)	(F)
Group 1	Quartzite, Massive And Thick Bedded.	2	0.01	254.71	4
Group 2	Andesite, Basalt Agglomerate, Lava, Volcanic Sandstone, Gabbro, Metamorphosed Basalt, Diorite And Porphyritic Microdiorite.	270	0.47	578.75	6

Group 3	Ultramafic Rock Fragments In Clay; Ultramafic Colluvium, Constituent Minerals.	91	0.00	21758.91	8
Group 4	Biocalcarenite, Biomicrite, Calcirudite, Rare Argillaceous Limestone, Chert, Marble, Massive To Thick Bedded Limestone.	1	0.01	93.20	3
Group 5	Volcanic Conglomerate, Tuffaceous Sandstone, Minor Siltstone, Volcaniclastic Basaltic And Andesitic Breccia.	0	0.00	0.00	1
Group 6	Calcite-Quartz-Sericite-Chlorite-Albite Schist, Variably Schistose Limestone, Hornfels, Shale, Siltstone, Slate, Phyllite.	117	0.14	824.70	7
Group 7	Argillaceous Biomicrite, Micrite, Coralgall Limestone Calcareous Mudstone, Calcarenite: Basinal Facies, Conglomerate, Sandstone, Mudstone; Alluvium, Siltstone.	123	0.37	334.74	5
Group 8	Alluvium, Swamp, Beach Deposits.	0	0.00	0.00	1
	Total	604	1		

4-5 Hkw&vk—fr;kj

Hkw&vk—fr;kj HkwL[kyu dh ?kVuk dks çHkkfor djus okys çeq[k dkjdxsa esa ls ,d gSaA eycs dh mifLFkfr ds dkj.k xgjs isfMesaV vfraosnu'khy gksrs gSaA ck<+ ds eSnku de laosnu'khy gksrs gSa D;ksafd os dksey <yuksa ij gksrs gSa tcfD ?kkfV;kj de eycs ds dkj.k de laosnu'khy gksrh gSaA laiw.kZ v/;;u {ks= dh Hkw&vk—fr;ksa dks HkwL[kyu dh laosnu'khyrk ds vk/kkj ij 6 oxksaZ esa foHkkftr fd;k x;k gSA ,sfrgkfld ?kVukvksa ds vk/kkj ij ;g ns[kk x;k gS fd fcuk ;k detksj lajpukRed fu;a=.k okys igkM+h bykds HkwL[kyu ds fy, vfraosnu'khy gksrs gSaA çR;sd Hkw&vk—fr oxZ dh jSafdax lkekU;hdj.k ewY; ds vk/kkj ij dh xbZ gS tks ,sfrgkfld ?kVukvksa dh la;k dks fo'ks"k Hkw&vk—fr oxZ ds {ks=Qy çfr'kr ls foHkkftr djds çklr fd;k x;k gSA ;gka jSad Ng vf/kdre laosnu'khyrk dks bafxr djrk gS tcfD jSad ,d U;wure laosnu'khyrk dks bafxr djrk gSA bl jSafdax dk mi;ksx djrs gq,] Hkw&vk—fr;ksa ds fy, fo"kr ekufp= rS;kj fd;k x;k gSA

**rkfydk% Ng Hkw&vk—fr;ksa ds oxksaZ esa ,sfrgkfld
?kVukvksa dk forj.k vkSj mudh jSafdax**

Landform Class	Landforms Description	Count of Historical Events	Area %	Normalization (C*D)	Rank
(A)	(B)	(C)	(D)	(E)	(F)
Class1	Swamps	0	0.06	0.00	1
Class2	Plains	9	0.13	67.45	4
Class3	Alluvial fans	0	0.00	0.00	1
Class4	Plateaux	12	0.02	561.62	5
Class5	Structurally controlled ridges	0	0.01	0.00	1
Class6	Weak/not structurally controlled ridges	583	0.77	752.43	6
	Total	604	1		

4-6 feêh

feêh dh cukov vkSj xgjkBZ <yku dh fLFkirk dks çHkkfor djrh gSA ,Q,vks ds gkeksZukbTM oyZ~M l,y MsVksl ds MsVk us feêh dh cukov] xgjkBZ vkSj ty fudklh {kerk ds vk/kkj ij ikap oxZ çnku fd,A tc bu oxksaZ dk ,sfrgkfld ?kVukvksa ds lkFk fo'ys"k.k fd;k x;k gS] rks ;g ns[kk x;k gS fd de xgjkBZ okyh eksVs vukt okyh feêh esa vf/kdre HkwL[kyu gqvk gSA çR;sd feêh oxZ dh jSafdax lkekU;hdj.k ewY; ds vk/kkj ij dh xbZ gS tks fd fo'ks"k feêh oxZ ds {ks= çfr'kr ls ,sfrgkfld ?kVukvksa dh la;k dks foHkkfr djds çklr fd;k x;k gSA ;gka jSad ikap vf/kdre laosnu'khyrk dks bafxr djrk gS tcf jSad ,d U;wure laosnu'khyrk dks bafxr djrk gSA bl jSafdax dk mi;ksx djrs gq, feêh ds fy, fo"k;xr ekufp= rS;kj fd;k x;k gSA

**rkfydk% ikap e`nk oxksaZ esa ,sfrgkfld ?kVukvksa dk forj.k
vkSj mudh jSafdax**

Soil Group	Soil Description	Count of Historical Events	Area %	Normalization (C/D)	Rank
(A)	(B)	(C)	(D)	(E)	(F)
Class1	Fine textured, moderately well drained, 100 meter depth	50	0.26	191.77	3
Class2	Medium textured, moderately well	499	0.58	856.20	4

Soil Group	Soil Description	Count of Historical Events	Area %	Normalization (C/D)	Rank
(A)	(B)	(C)	(D)	(E)	(F)
	drained, 100 meter depth				
Class3	Fine textured, imperfectly drained, 30 meter depth	0	0.00	0.00	1
Class4	Medium textured, imperfectly drained, 10 meter depth	20	0.13	151.69	2
Class5	Coarse textured, moderately well drained, 10 meter depth	35	0.02	1421.64	5
	Total	604	1		

4-7 Hkw daih;rk

HkwL[kyu dks fV^axj djus okys çeq[k dkj dksa esa ls ,d Hkw daih;rk gSA fo'ys" k.k ds fy, ihlhvkj,,QvkbZ }kjk fodflr 100 lky dh okilh vof/k ds O;kid laHkkO; Hkw daih; [krjs ds uD'ks dk mi;ksx fd;k x;k gSA pje Hkw&Roj.k eku ds vk/kkj ij laiw.kZ v/;;u {ks= dks çk— frd fojke dk mi;ksx djrs gq, nks {ks=ksa esa oxhZ—r fd;k x;k gSA ,sfrgkfld ?kVukvksa ls rgyuk djus ij ;g ns[kk x;k gS fd lcls vf/kd ?kVuk,a tksu 1 esa gqbZ gSaA çR;sd {ks= dh jSafdax lkekU;hdj.k ewY; ds vk/kkj ij dh xbZ gS tks fd fo'ks" k {ks= ds {ks= çfr'kr ls ,sfrgkfld ?kVukvksa dh la[;k dks foHkkftr djds çklr fd;k x;k gSA ;gka jSad 2 vf/kdre laosnu'khyrk dks bafxr djrk gS tcfD jSad ,d U;wure laosnu'khyrk dks bafxr djrk gSA bl jSafdax dk mi;ksx djrs gq, Hkw daih; ds vk/kkj ij fo" k;xr ekufp= rS;kj fd;k x;k gSA

rkfydk% nks Hkw daih; {ks=ksa esa ,sfrgkfld ?kVukvksa dk forj.k vkSj mudh jSafdax

Seismic Zone	Peak Ground Acceleration Value	Count of Historical Events	Area %	Normalization (C/D)	Rank
(A)	(B)	(C)	(D)	(E)	(F)
Zone 1	0.03-0.17	600	0.95	630.45	2
Zone 2	0.17-0.32	4	0.05	82.81	1
Total		604	1		

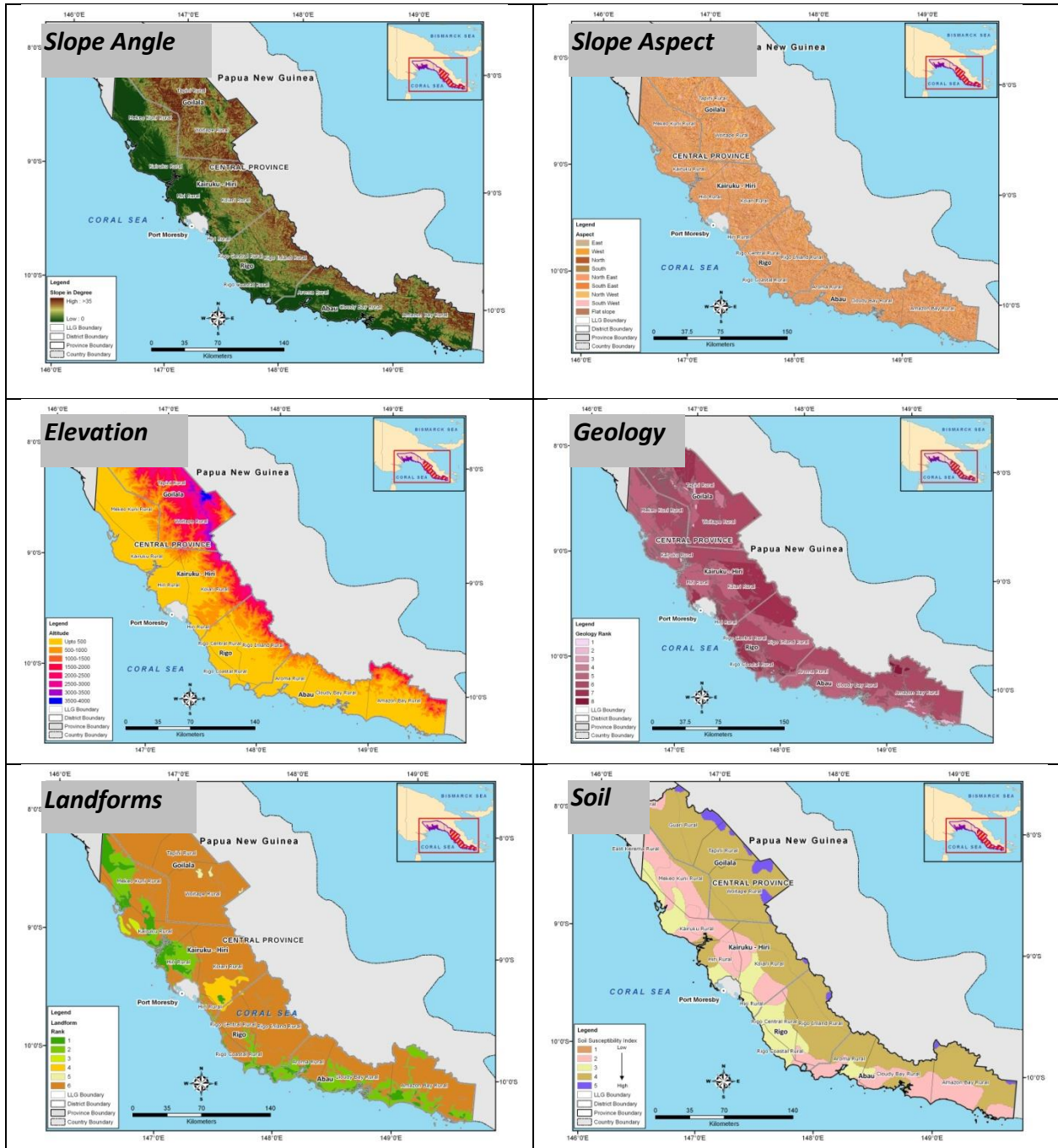
4-8 o"kkZ

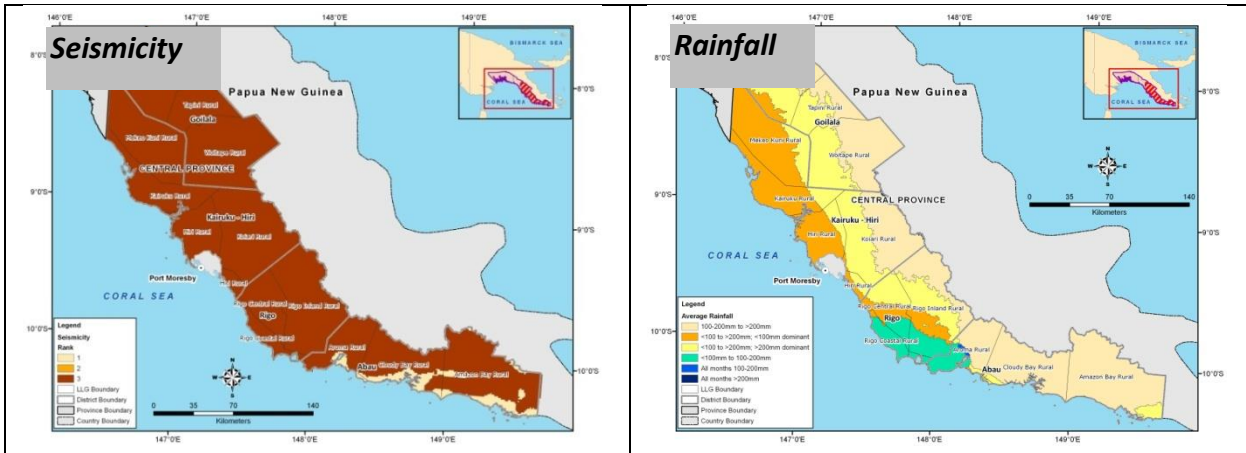
o"kkZ ds LFKkfud iSVuZ HkwL[kyu dh 'kq#vkr ds lkFk fudVrk ls tqM+s gq, gSa D;ksafd os vfLFkj <yuku esa ikuh dk ncko mRiUu djrs gSaA bls HkwL[kyu ds fy, ,d fV^axj dkjd ekuk tkrk gSa o"kkZ ds vk/kkj ij lEiw.kZ v/;;u {ks= dks 3 tksuksa esa foHkkftr fd;k x;k gSa ,sfrgkfld ?kVukvksa ds vk/kkj ij ;g ns[kk x;k gS fd vf/kdre HkwL[kyu dh ?kVuk,a ml {ks= esa gqbZa tgka vkSlr ekSleh o"kkZ 200 feeh ls vf/kd gSa çR;sd o"kkZ {ks= dh jSafdax lkekU;hdj.k ewY; ds vk/kkj ij dh xbZ gS tks fd ,sfrgkfld ?kVukvksa dh la;k dks fo'ks"k o"kkZ {ks= ds {ks= çfr'kr ls foHkkftr djds çklr fd;k x;k gSa ;gka jSad rhu vf/kdre laosnu'khyrk dks bafxr djrk gS tcfj jSad ,d U;wure laosnu'khyrk dks bafxr djrk gSA bl jSafdax dk mi;ksx djrs gq, o"kkZ ds fy, fo"k;xr ekufp= rS;kj fd;k x;k gSA

rkfydk% rhu {ks=ksa esa ,sfrgkfld ?kVukvksa dk forj.k vkSj mudh jSafdax

Rainfall Zone	Average Seasonal Rainfall (mm)	Count of Historical Events	Area %	Normalization (C/D)	Rank
(A)	(B)	(C)	(D)	(E)	(F)
Zone1	100	4	0.22	18.54	2
Zone2	100-200	0	0.06	0.00	1
Zone3	>200	600	0.72	828.00	3
	Total	604	1		

tSlk fd mi [kaM 3-5-3-1 ls 3-5-3-8 esa of.kZr gS] ,sfrgkfld ?kVukvksa dh jSafdax ds vk/kkj ij çR;sd dkjd dk fo"k;xr ekufp= rS;kj fd;k x;k gSA bu ekufp=ksa dk mi;ksx {ks= dh HkwL[kyu laosnu'khyrk dks fu/kkZfjr djus ds fy, vkxs fd;k x;k gSA





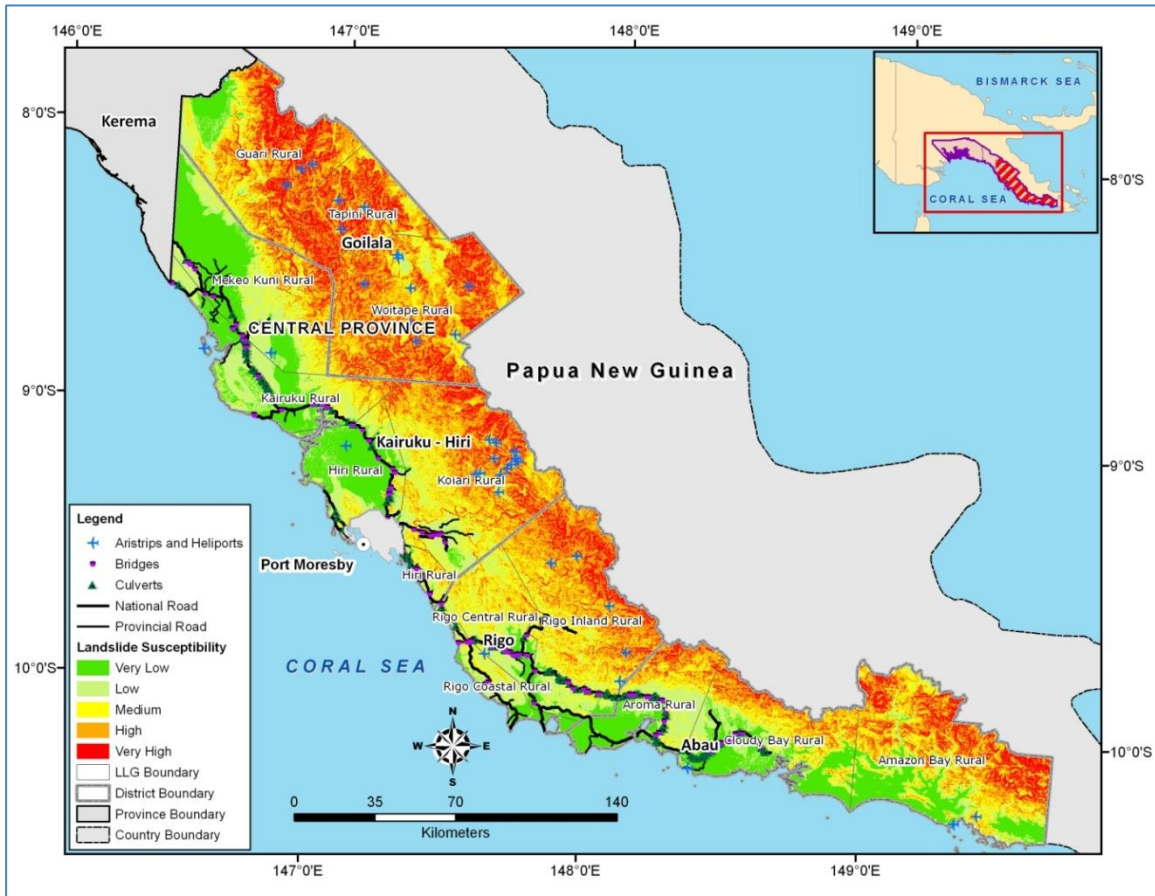
fp=% jSafdax ds vk/kkj ij HkwL[kyu ds dkjd dkjdxsa ds fy, rS;kj fd, x, fo" k;xr ekufp=

vafre HkwL[kyu laosnu'khyrk {ks= çklr djus ds fy,] Åij of.kZr vkB dkjdxsa dh tksM+hokj rgyuk dh xbZA fo'ys" k.kkRed inkuqØe – f"Vdks.k ¼lkrh] 2008½ ds vk/kkj ij çR;sd dkjd dks Hkkj lkSaik x;k gSA

mi [kaM 3-5-3-8 esa mfYyf[kr lw= dk mi;ksx djds vkSj „pjh dk mi;ksx djds çklr otu dks çR;sd dkjd ds laosnu'khyrk ewY; ls xq.kk fd;k x;k gS vkSj var esa lezx HkwL[kyu laosnu'khyrk lwpdkad çklr djus ds fy, tksM+k x;k gSA

HkwL[kyu laosnu'khyrk lwpdkad ¼LSI½ ¾ 0-46* <yku + 0-12*HkwfoKku + 0-09*Hkw&vk—fr;kj + 0-11*feêh + 0-06*o"kkZ + 0-06*Hkw daih;rk + 0-05*ÅapkbZ + 0-05*igyw

e/; çkar ds HkwL[kyu laosnu'khyrk ekufp= esa fn[kk;k x;k gSA Hkkfjr ;ksx fo'ys" k.k }kj çklr ekufp= dks çk—frd fojke ds vk/kkj ij ikap laosnu'khyrk oxksaZ esa oxhZ—r fd;k x;k gSA 5-03 ;k vf/kd ds mPpre Hkkj eku okys {ks=ksa dks vfr mPp HkwL[kyu laosnu'khyrk {ks= ds varxZr vkus ds :i esa ukfer fd;k x;k gSA blh çdkj] 4-05&5-03 ds chp Hkkj eku okys {ks=ksa dks mPp HkwL[kyu laosnu'khyrk {ks= ds varxZr vkus ds :i esa ukfer fd;k x;k gS; 3-15&4-05 ds chp e/;e HkwL[kyu laosnu'khyrk {ks= ds varxZr vkus ds :i esa; 2-35&3-15 ds chp de HkwL[kyu laosnu'khyrk {ks= ds varxZr vkus ds :i esa; vkSj {ks= <2-35 cgqr de HkwL[kyu laosnu'khyrk {ks= ds varxZr vkrs gSaA



fp=% v/;u {ks= dk HkwL[kyu laosnu'khyrk ekufp=
 rkfydk ,y,yth Lrj ij HkwL[kyu ds fy, vfrlaosnu'khy {ks= ds forj.k
 dks n'kkZrh gSA fo'ys" k.k ds vk/kkj ij xqvkjh xzkeh.k] dksb;kjh
 xzkeh.k] rkfiuh xzkeh.k vkSj oksbrkis xzkeh.k ,y,yth HkwL[kyu ds
 fy, vfrlaosnu'khy gSaA

rkfydk% fofHkUu ,y,yth esa HkwL[kyu dh vk'kadk okys çfr'kr
 {ks= dk forj.k

LLG Name	Very Low	Low	Medium	High	Very High
Amazon Bay Rural	21%	13%	22%	25%	19%
Aroma Rural	31%	33%	15%	14%	7%
Cloudy Bay Rural	36%	23%	18%	17%	6%
Guani Rural	8%	11%	22%	32%	27%
Hiri Rural	53%	28%	14%	4%	1%
Kairuku Rural	37%	45%	11%	5%	2%
Koiani Rural	1%	18%	20%	25%	17%

5 ifjlaifÙk;ksa ds ifjogu ds çfr laosnu'khyrk

HkwL[kyu tksf[ke ewY;kadu ds fy,] fdlh fo'ks"k LFkku ij Li"V ifjek.k&vko`fÙk laca/k dh vuqifLFkfr ds dkj.k tksf[ke ?kVd dk vkdyu djuk lcls dfBu gSA ,s/s ekeyksa esa] tksf[ke okys rRoksa dh Hks|rk lkekU; :i ls ,d LVst MSest doZ ds :i esa O;ä dh tkrh gS] tks [krjukd ?kVuk dh rhozrk dks tksf[ke esa fo'ks"k çdkj ds rRoksa dks visf{kr uqdlku dh fMxzh ls lacaf/kr djrh gSA ;s oØ ;k rks ,sfrgkfld {kfr MsVk ds lkaf[;dh; fo'ys"k.k }kjk ;k fo'ks"kk fu;eksa ds vHkko esa çklr fd, tkrs gSaA visf{kr HkwL[kyu ifjek.k ;k vk;ru dh vfuf'prrk vkSj HkwL[kyu ifjek.k vkSj vko`fÙk ds chp vLi"V laca/k ds dkj.k] vDlj dsoy 1 ¼dqy iru½ dh Hks|rk dk mi;ksx fd;k tkrk gSA thvkbZ,l fo'ys"k.k esa] tksf[ke ekufp= dks lh/ks tksf[ke MsVk ds lkFk e<+k tkrk gS vkSj mPp tksf[ke okys {ks= esa vkus okys IHkh tksf[ke dks mPp tksf[ke esa ekuk tkrk gSA ,th,lvks ¼2001½ us fofHkUu çdkj ds HkwL[kyu ds fy, tksf[ke okys rRoksa ds rhu oxksaZ ds fy, Hks|rk dk ,d ljj oxhZdj.k ifjHkkf"kr fd;kA orZeku v/;;u esa ,th,lvks ds la'kksf/kr Hks|rk oxksaZ dk mi;ksx tksf[ke ewY;kadu ds fy, fd;k x;k gS tSlk fd rkfydk esa fn[kk;k x;k gSA

rkfydk% HkwL[kyu dh laosnu'khyrk vkSj <yku dks.k ds vk/kkj ij lqHks|rk oxZ

S.N.	Susceptibility Class	Slope (Degree)	Vulnerability Code	Vulnerability Class
1	Very High / High	≥25	3	High
2	Medium	≥25	2	Medium

3	Very High/High/Medium	<25	1	Low
4	Very Low/Low	<25	0	Very Low

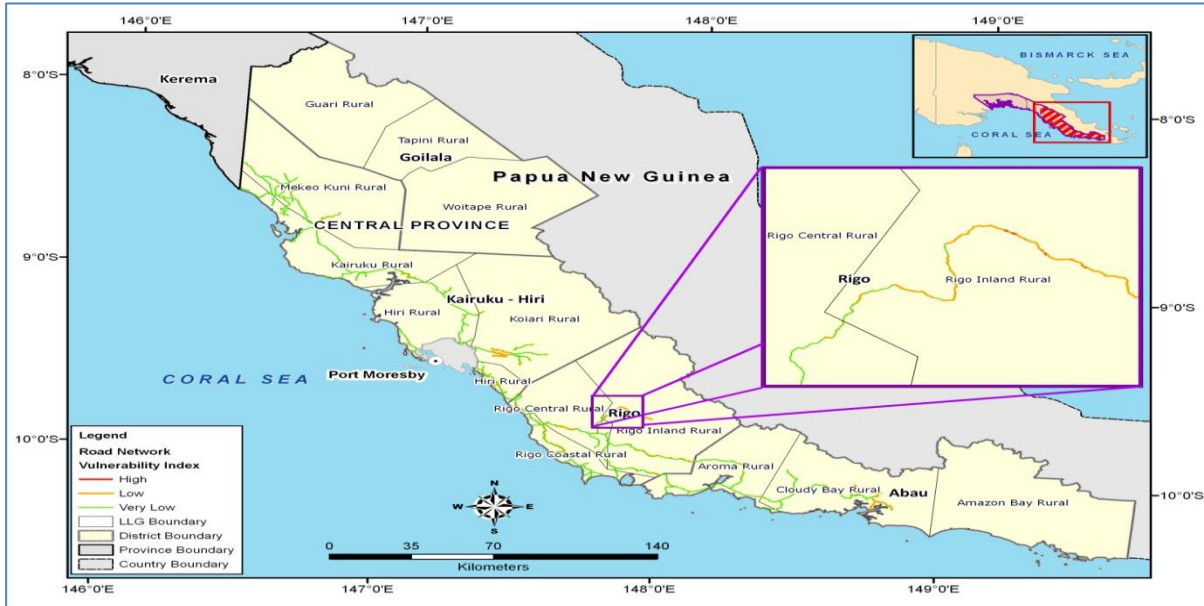
6- tksf[ke vkdyu

orZeku v/;;u esa] ,th,lvks Hks|rk oxksaZ dk mi;ksx <yku dks.k vkSj HkwL[kyu laosnu'khyrk oxksaZ ds lkFk lglaca/k esa fd;k x;k gS tSlk fd rkfydk esa of.kZr gSA ifjogu volajpuk ds fofHkUu rRoksa dks HkwL[kyu dh vk'kadk okys {ks=ksa ds lkFk e<+k x;k gS vkSj çHkkfor tksf[ke dh x.kuk ds fy, çR;sd rRo dks Hks|rk oxZ lkSais x, gSaA ifjogu volajpuk ds fofHkUu ?kVdksa ds tksf[ke ewY;kadu dk o.kZu vxys Hkkx esa fd;k x;k gSA

6-1 jksM

e/; çkar esa jk"V^{ah}; jktekxZ dh dqy yackbZ 747 fdeh gSA ftlesa ls dksbZjh xzkeh.k vkSj jhxks lsaV^{ay} :jy ,y,yth ds lksxsjh vkSj foxk jktekxksaZ dk yxHkx 2-8 fdeh IM+d [kaM mPp laosnu'khy {ks=ksa esa vkrk gSA ;s [kaM 25&fMxzh ls vf/kd <yku dks.k ij gSa vkSj mPp ls cgqr vf/kd HkwL[kyu laosnu'khy {ks= esa vkrs gSaA yxHkx 78 fdeh IM+d [kaM de laosnu'khy {ks= esa gS] ftlesa ls 4 fdeh fgjVkuks jktekxZ ds gSa vkSj 29 fdeh ekxh jktekxZ ds gSaA

çkarh; IM+d ds ekeys esa dksbZ Hkh IM+d [kaM vfr laosnu'khy {ks= esa ugha vkrk gSA dqy 312 fdeh IM+d [kaM esa ls yxHkx 17 fdeh IM+d [kaM de laosnu'khy {ks=ksa esa gSaA bl 17 fdeh IM+d [kaM esa 14 fdeh feêh dh IM+d gS vkSj 'ks"k 3 fdeh IM+dsa ;k rks lhy gSa ;k ctjh IM+d gS tks fgjh xzkeh.k] dS#dq xzkeh.k] dksbZjh xzkeh.k vkSj jhxks lsaV^{ay} xzkeh.k ,y,yth esa gSaA IM+dksa ds bu detksj oxksaZ dks fp= vkSj rkfydk esa n'kkZ;k x;k gSA



fp=% e/; çkar esa HkwL[kyu ds dkj.k IM+dksa ds laosnu'khy
[kaM

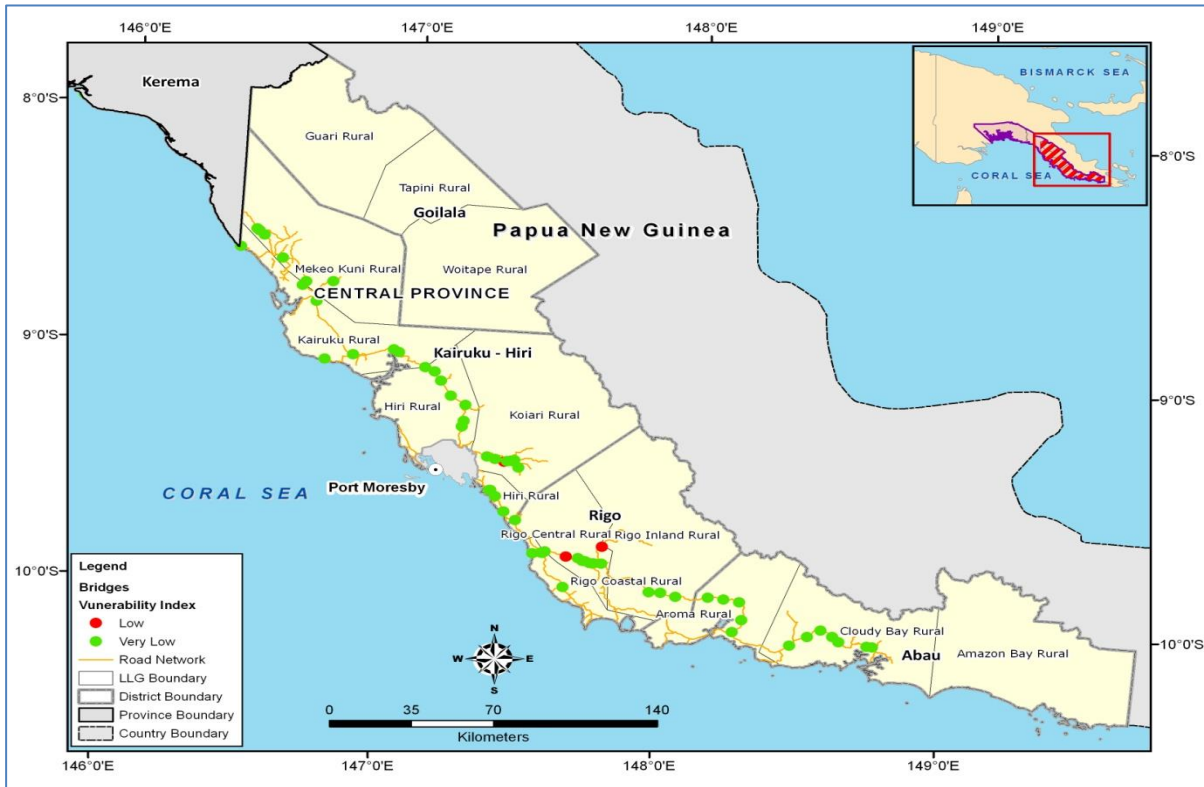
rkfydk% jk"V^{ah}; IM+d vkSj çkarh; IM+d dh laHkkfor çHkkfor yackbZ
ds ,y,yth Lrj dh yackbZ ds lkFk&lkFk laHkkfor vf/kdre çHkkfor
tksf[ke ewY;

LLG Name	Road Type	Length of Affected National Road (Km)	Probable Maximum Affected Exposure Value for National Roads (Million PNG Kina)	Length of Affected Provincial Road (Km)	Probable Maximum Affected Exposure Value for Provincial Roads (Million PNG Kina)
Aroma Rural	Gravel Road	5	6	-	-
Cloudy Bay Rural	Gravel Road	7	8		
	Earthen Road	-	-	11	-
Hiri Rural	Gravel Road	-	-	2	1.9
	Sealed Road	6	8	1	1.51
Kairuku Rural	Gravel Road	1	1	0.03	0.04
	Sealed Road	4	5		
Koiari Rural	Gravel Road	3	4	0.18	0.22
	Sealed Road	5	9		

LLG Name	Road Type	Length of Affected National Road (Km)	Probable Maximum Affected Exposure Value for National Roads (Million PNG Kina)	Length of Affected Provincial Road (Km)	Probable Maximum Affected Exposure Value for Provincial Roads (Million PNG Kina)
	Earthen Road			3	0
MekeoKuni Rural	Gravel Road	1	1	-	-
	Sealed Road	-	-	-	-
Rigo Central Rural	Gravel Road	13	17	0	0.06
	Sealed Road	3	4	-	-
Rigo Coastal Rural	Sealed Road	9	12		
Rigo Inland Rural	Gravel Road	24	35	-	-
	Sealed Road	0	0		
Grand Total		81	110	17	3.73

6-2 iqy

e/; çkar esa dqy 64 iqy gSa] ftuesa ls rhu iqy de laosnu'khy {ks= esa gSa vkSj ckdH IHkh HkwL[kyu ls çHkkfor ugha gSaA laHkkfor vf/kdre çHkkfor tksf[ke ewY; ds lkFk bu iqykSa dh lwph rkfydk esa çnku dh xbZ gSA bu detksj iqykSa dks fp= esa n'kkZ;k x;k gS&



fp=% e/; çkar esa HkwL[kyu ds dkj.k laosnu'khy iqy
rkyfdk% laHkkfor vf/kdre çHkkfor tksf[ke ewY; ds lkFk e/; çkar
esa HkwL[kyu ds dkj.k laHkkfor çHkkfor iqyksa dh lwph

LLG_N	Road	Road_I D	Bridge Name	River_Nam e	Probable Maximum Affected Exposure Value (Million PNG Kina)
Rigo Central Rural	Magi Highway	NR000 2	Dogona Creek Bridge	Dogona Creek	0.89
Rigo Central Rural	NA	DF330 *	Nerami Bridge		0.72
Koiari Rural	Sogeri	NM330 1	Narirogi Bridge		0.72
Grand Total					2.33

6-3 dYoVZ~l

iqyksa dh rjg] HkwL[kyu ds dkj.k dksbZ Hkh iqfy;k mPp laosnu'khy {ks= esa ugha gSA dqy 271 iqfy;ksa esa ls 17 iqfy;k de laosnu'khy {ks=ksa esa gSaA çHkkfor iqfy;ksa esa 16 ekxh gkbZos ij gSa tks DykmMh cs :jy] vjksek :jy] jhxks buySaM :jy] jhxks lsaV^{ay} :jy vkSj fgjh :jy ,y,yth ls gksdj xqtj jgs gSa] tcf d dS#dq :jy ,y,yth ls xqtjus okys fgjVkuks gkbZos ij gSA bu detksj iqfy;ksa dks fp= esa n'kkZ;k x;k gS vkSj mudk fooj.k rkyfdk esa fn;k x;k gSA



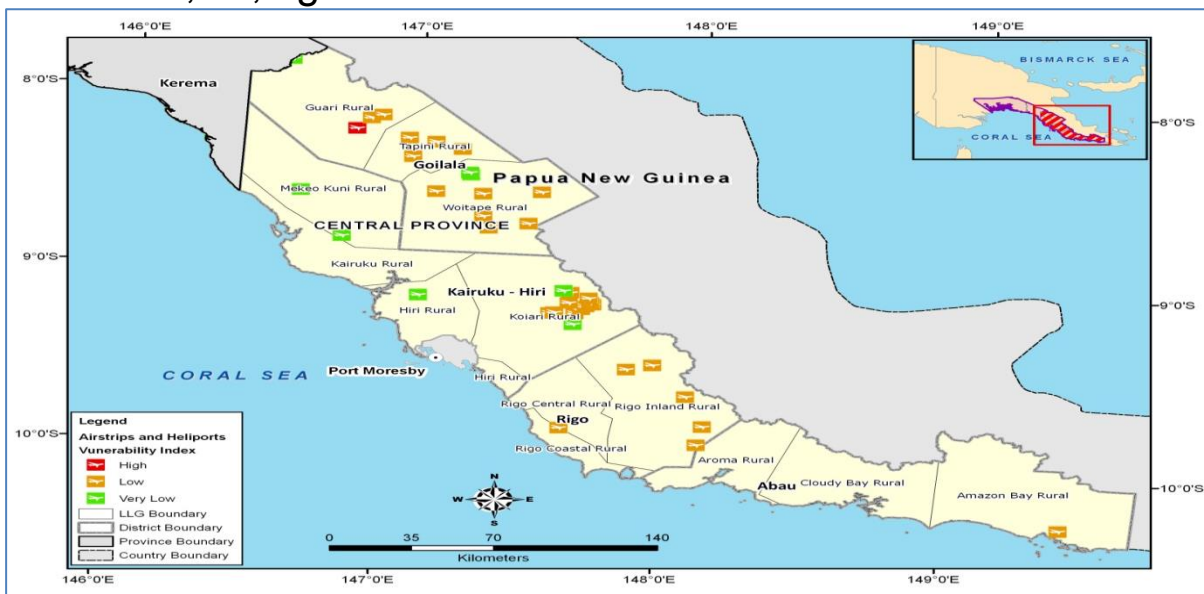
fp=% e/; çkar esa HkwL[kyu ds dkj.k laosnu'khy iqfy;k
 rkfydk% laHkkfor vf/kdre çHkkfor tksf[ke ewY; ds lkFk e/; çkar
 esa HkwL[kyu ds dkj.k laHkkfor çHkkfor iqfy;ksa dh lwph

Culvert ID	LLG Name	Road	Road Id	Construction Type	Probable Maximum Affected Exposure Value (Million PNG Kina)
C195	Cloudy Bay Rural	Magi Highway	NR0 002	Steel/Single-Barrel	0.13
C194	Cloudy Bay Rural	Magi Highway	NR0 002	Steel/Single-Barrel	0.13
C193	Cloudy Bay Rural	Magi Highway	NR0 002	Concrete/Multi-Barrel	0.26
C88	Aroma Rural	Magi Highway	NR0 002	Not Accessible	0.13
C56	Rigo Inland Rural	Magi Highway	NR0 002	Steel/Multi-Barrel	0.26
C57	Rigo Inland Rural	Magi Highway	NR0 002	Concrete/Multi-Barrel	0.26
C32	Rigo Inland Rural	Magi Highway	NR0 002	Steel/Multi-Barrel	0.26
C40	Rigo Inland Rural	Magi Highway	NR0 002	Steel/Single-Barrel	0.13
C28	Rigo Inland Rural	Magi Highway	NR0 002	Steel/Single-Barrel	0.13
C180	Rigo Central Rural	Magi Highway	NR0 002	Concrete/Multi-Barrel	0.26
C177	Rigo	Magi	NR0	Concrete/Singl	0.13

Culvert ID	LLG Name	Road	Road Id	Construction Type	Probable Maximum Affected Exposure Value (Million PNG Kina)
	Central Rural	Highway	002	e-Barrel	
C176	Rigo Central Rural	Magi Highway	NR0 002	Concrete/Multi-Barrel	1.33
C171	Rigo Central Rural	Magi Highway	NR0 002	Concrete/Multi-Barrel	0.40
C158	Hiri Rural	Magi Highway	NR0 002	Concrete/Singl e-Barrel	0.13
C156	Hiri Rural	Magi Highway	NR0 002	Concrete/Singl e-Barrel	0.13
C155	Hiri Rural	Magi Highway	NR0 002	Concrete/Singl e-Barrel	0.13
C398	Kairuku Rural	Hiritano Highway	NR0 001	Concrete/Singl e-Barrel	0.13
Grand Total					4.33

6-4 gokbZ ifê;ka

e/; çkar esa dqy feykdj 40 gokbZ iêh vkSj gsyhiksVZ gSaA ftlesa ls xqvkjh xzkeh.k ,y,yth dk ,d gsyhiksVZ mPp laosnu'khy {ks= esa gS vkSj 20 gokbZ ifê;ka de laosnu'khy {ks= esa gSaA ;s IHkh 20 gokbZ ifê;ka lfØ; gSa vkSj buesa ls rhu ftyk gokbZ iêh gSaA laHkkfor vf/kdre çHkkfor tksf[ke ewY; ds lkFk bu gokbZ ifê;ksa dh lwph rkfydk esa çnku dh xbZ gSA bu detksj gokbZ ifê;ksa dks fp= - esa n'kkZ;k x;k gS



**fp=% e/; çkar esa HkwL[kyu ds dkj.k laosnu'khy gokbZ
ifê;ka/gsyhiksVZ~I**

rkfydk% e/; çkar ds fy, HkwL[kyu ds dkj.k ifjogu cqfu;knh
<kaps esa laHkkfor vf/kdre çHkkfor tksf[ke dk lkjka'k

Exposure Type	Total No. of Facilities/ Class	No. of Affected Exposure	Total Exposure Value (Million PNG Kina)	Probable Affected Exposure Value (Million PNG Kina)	Maximum Probable Affected Exposure %
National Road (in Km)	747	81	2,949	110	4%
Provincial Road (in Km)	312	3	678	4	1%
Bridges	64	3	225	2	1%
Culverts	271	17	237	4	2%
Airports	40	20	1	0.37	28%

**rkfydk% HkwL[kyu ds dkj.k ifjogu volajpuk esa ,y,yth Lrj dh
gkfu**

LLG ID	LLG Name	District Name	Total Exposure Value (Million PNG Kina)	Total Loss For Transport Infrastructure (Million PNG Kina)	Loss %
1	Amazon Bay Rural	Abau	0.43	-	0%
2	Aroma Rural	Abau	543.97	6.54	1%
3	Cloudy Bay Rural	Abau	441.77	8.71	2%
4	Guari Rural	Goilala	0.29	0.09	31%
5	Tapini Rural	Goilala	0.34	0.10	29%
6	Woitape Rural	Goilala	0.37	0.10	27%
7	Hiri Rural	Kairuku - Hiri	830.43	11.33	1%
8	Kairuku Rural	Kairuku - Hiri	760.12	6.65	1%
9	Koiari Rural	Kairuku - Hiri	214.70	13.88	6%
10	MekeoKuni Rural	Kairuku - Hiri	467.93	0.69	0%
11	Rigo Central Rural	Rigo	503.11	24.77	5%
12	Rigo Coastal Rural	Rigo	292.83	11.74	4%
13	Rigo Inland Rural	Rigo	312.56	35.99	12%



fp=% ,y,yth Lrj HkwL[kyu ds dkj.k ifjogu cqfu;knh <kaps ds laHkkfor çHkkfor tksf[ke

fo'ys"k.k ds vk/kkj ij dksbZjh xzkeh.k vkSj jhxks lsaV^{ay} :jy ,y,yth dh jk"V^{ah}; IM+d vR;/f/kd laosnu'khy gSA ifjogu volajpuk ds vU; çHkkfor tksf[ke rRo de laosnu'khy {ks= esa fxj jgs gSaA laosnu'khy {ks=ksa ij gokbZ ifê;ka laHkkfor çHkkfor tksf[ke ewY; esa vf/kdre ;ksxnku ns jgh gSaA

tksf[ke çksQkby

,y,yth }kjk tksf[ke tksf[keksa dh fLFkfr dks csgrj <ax ls le>us ds fy,] Vhe us çR;sd tksf[ke Js.kh ds fy, laHkkfor vf/kdre uqdlku ¼ih,e,y½ dh rqyuk djus vkSj ,y,yth ds fy, rqyukRed tksf[ke çksQkby rS;kj djus ds fy, ,d vH;kl fd;ka ;g [krijksa ds dkj.k tksf[keksa dh ,dkxzk dks le>us esa vkSj ckn esa] vkink çca/ku ;kstuk vkSj ifjogu

laifÙk ds uqdlku dks jksdus ds fy, DoW }kjk rS;kfj;ksa ds fy, cgqr mi;ksxh gksxkA

tksf[ke çksQkby rS;kj djus ds fy,] lcls igys] Vhe us IHkh okilh vof/k ck<+ dh ?kVukvksa ds fy, e/; çkar ds fy, fofHkUu ifjogu {ks= dh laifÙk ds uqdlku vkSj uqdlku dk vuqeku yxk;kA bls ckn] fofHkUu ,y,yth ds lez tksf[ke tksf[keksa dh rgyukRed :i ls ,d cks/kxE; rLohj çklr djus ds fy, uqdlku dks mPp] e/;e vkSj fuEu tksf[ke oxksaZ esa oxhZ—r fd;k x;k gSA

çk—frd tsuDI lkaf[;dh; rduhd dk mi;ksx djrs gq, çR;sd ,y,yth esa IHkh ifjogu laifÙk;ksa ds laHkkfor lez uqdlku ds vk/kkj ij çR;sd [krjs ¼varnsZ'kh; ck<+] rVh; ck<+] Hkwdai vkSj HkwL[kyu½ ds fy, tksf[ke oxZ rS;kj fd, tkrs gSaA ;g rduhd ,d MsVk DyLVfjax rduhd gS ftls fofHkUu oxksaZ esa ewY;ksa dh loksZÙke O;oLFkk fu/kkZfjr djus ds fy, fMtkbu fd;k x;k gSA ;g fofHkUu oxksaZ ds Hkhrj fopj.k dks de djus vkSj fofHkUu oxksaZ ds chp fopj.k dks vf/kdre djus ds fy, ,d vuqdwyu rduhd dk mi;ksx djrk gSA

mPp tksf[ke oxZ dk eryc gS fd ,y,yth vU; ,y,yth dh rgyuk esa fdlh fo'ks"k [krjs ds fy, lcls detksj gSa vkSj bu ,y,yth esa ifjogu laifÙk;ksa ds {kfrxzLr gksus dh lcls vf/kd laHkkouk gSA bu ,y,yth esa {kfr ds dkj.k laHkkfor vf/kdre uqdlku vf/kd gSaA

e/;e tksf[ke oxZ dk eryc gS fd ,y,yth vU; ,y,yth dh rgyuk esa ,d fo'ks"k [krjs ds fy, e/;e :i ls detksj gSa vkSj bu ,y,yth esa ifjogu laifÙk e/;e tksf[ke esa gSA bu ,y,yth esa ifjogu ifjlaifÙk {kfr ds dkj.k laHkkfor vf/kdre uqdlku rgyukRed :i ls mPp tksf[ke okyh Js.kh ls de gSA

de tksf[ke oxZ dk eryc gS fd ,y,yth vU; ,y,yth vkSj ifjogu ifjlaifÙk;ksa dh rgyuk esa varnsZ'kh; ck<+ ds çfr de laosnu'khy gSa] ftuds {kfrxzLr gksus dh laHkkouk cgqr de gS ;k ux.; tksf[ke ds rgr gSaA

rkfydk varnsZ'kh; ck<+ ¼100 o"kZ dh okilh vof/k½] rVh; ck<+ ¼100 o"kZ dh okilh vof/k½] Hkwdai ¼2]500 o"kZ dh okilh vof/k½ vkSj e/; çkar esa fLFkr ,y,yth }kjk HkwL[kyu dh laosnu'khyrk ds dkj.k laHkkfor vf/kdre uqdlku ¼ih,e,y½ ds vk/kkj ij rgyukRed tksf[ke çksQkby çnku djrh gSA

rkfydk% ,y,yth ds fy, rgyukRed tksf[ke çksQkby

LLG Name	District Name	PML for 100-yr Return Period Inland Flood Hazard (thousand PNG Kina)	Inland Flood Risk Category	PML maximum Loss for 100-yr Return Period Coastal Flood (PNG Kina) Coastal Flood Hazard	Coastal Flood Risk Category	PML maximum Loss for 2500-yr Return Period EQ hazard (thousand PNG Kina)	EQ Risk Category	PML due to Landslide Susceptibility (thousand PNG Kina)	Landslide Risk Category
Amazon Bay Rural	Abau	-	Low	No loss	Low	5	Low	No Loss	Low
Aroma Rural	Abau	177	Low	203	High	24,644	Medium	6,539	Medium
Cloudy Bay Rural	Abau	2,263	Medium	No loss	Low	32,121	Medium	8,713	Medium
Guari Rural	Goilala	-	Low	No loss	Low	No Loss	Low	87	Low
Hiri Rural	Kairuku - Hiri	758	Low	39	Medium	156,231	High	11,333	Medium
Kairuku Rural	Kairuku - Hiri	7,204	High	2	Low	51,599	Medium	6,650	Medium
Koiari Rural	Kairuku - Hiri	2,687	Medium	No loss	Low	20,388	Medium	13,876	Medium
Mekeo Kuni Rural	Kairuku - Hiri	1,666	Medium	No loss	Low	30,268	Medium	694	Low
Rigo Central Rural	Rigo	3,023	Medium	No loss	Low	77,312	High	24,768	High
Rigo Coastal Rural	Rigo	171	Low	13	Low	66,868	Medium	11,745	Medium
Rigo Inland Rural	Rigo	1,060	Low	No loss	Low	22,689	Medium	35,994	High
Tapini Rural	Goilala	-	Low	No loss	Low	0.0001	Low	103	Low
Woitape Rural	Goilala	1	Low	No loss	Low	0.001	Low	103	Low